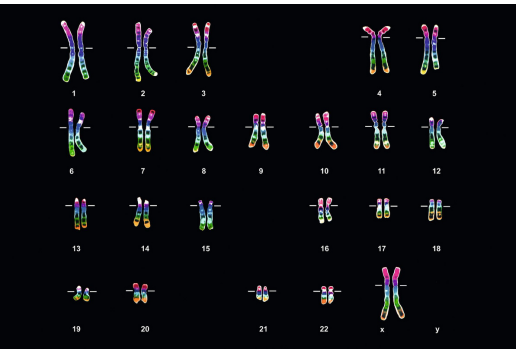
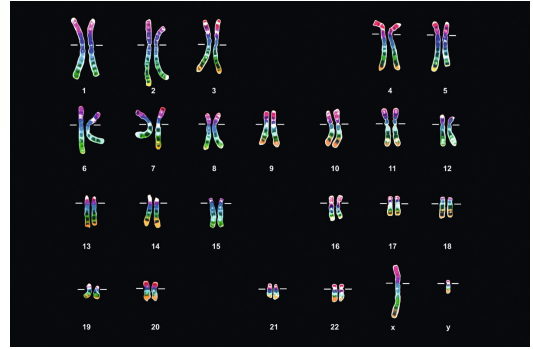
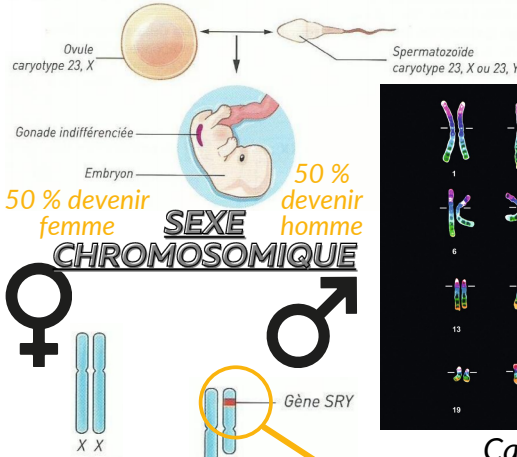


LES DIFFÉRENTS NIVEAUX DE DÉFINITION DU SEXE

FECONDATION



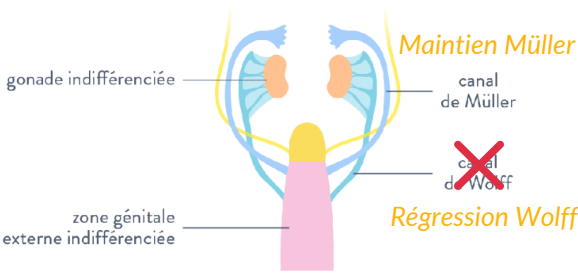
Caryotype 46 XX



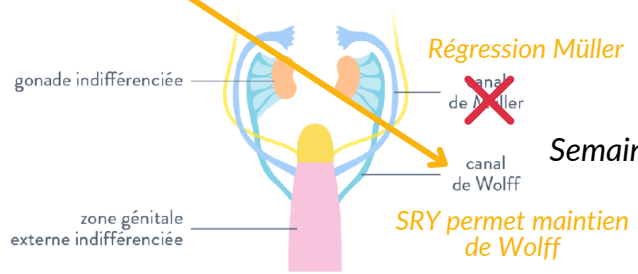
Caryotype 46 XY

Développement embryonnaire

appareil génital indifférencié

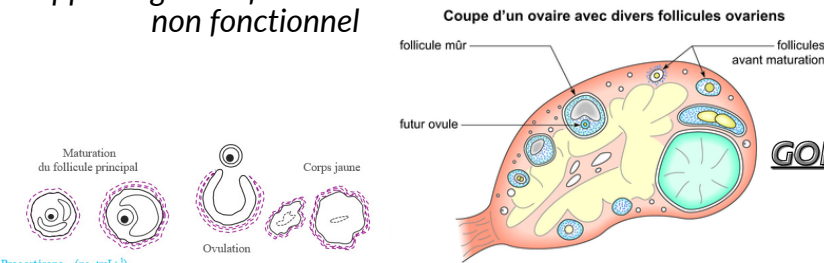
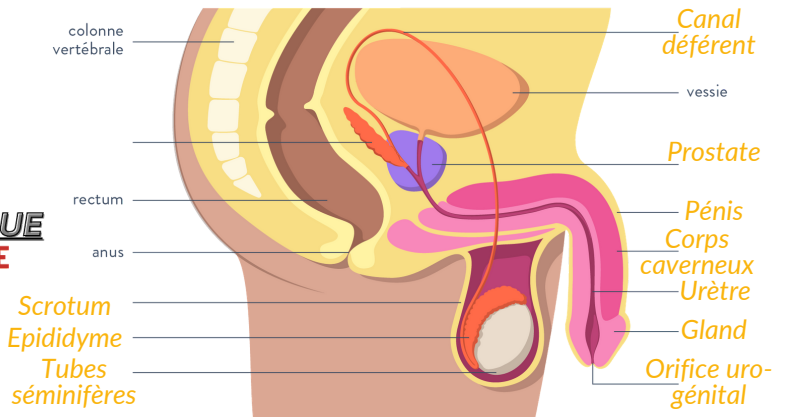
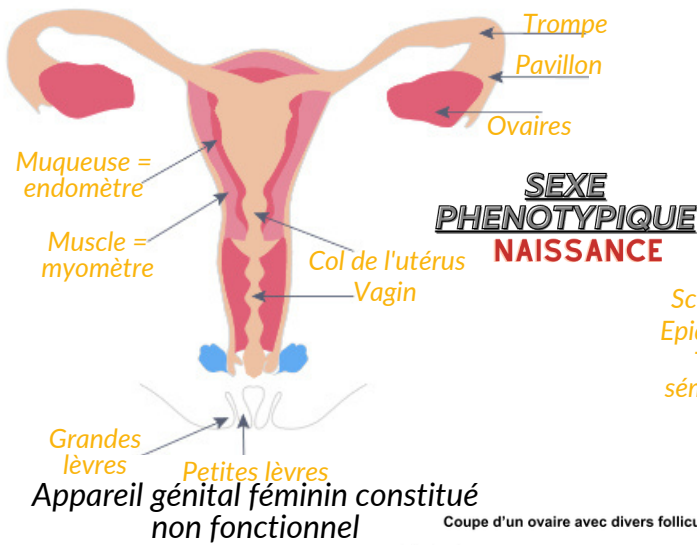


appareil génital indifférencié

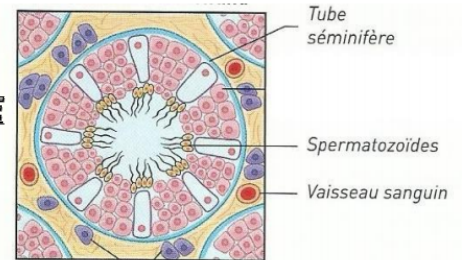


Semaine 8

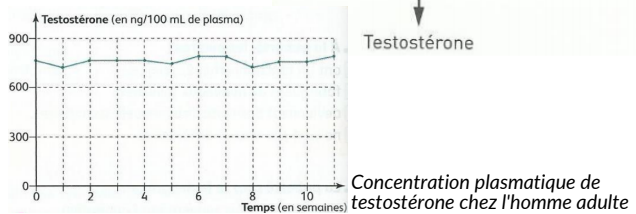
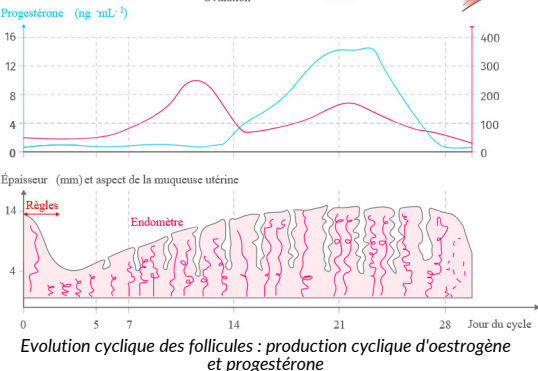
Développement foetal



Coupe de testicule



SEXE GONADIQUE



PUBERTE

SEXE FONCTIONNEL

Appareil sexuel fonctionnel féminin : production cyclique d'ovules et d'hormones (progestérone et oestrogènes) + caractères sexuels secondaires.

Appareil sexuel fonctionnel masculin : production continue de spermatozoïdes et d'hormone (testostérone) + caractères sexuels secondaires.